



Feature :

- SPST
- Mini in dimension
- Bi-color LED illuminated available
- SMT and PCB terminal

Application :

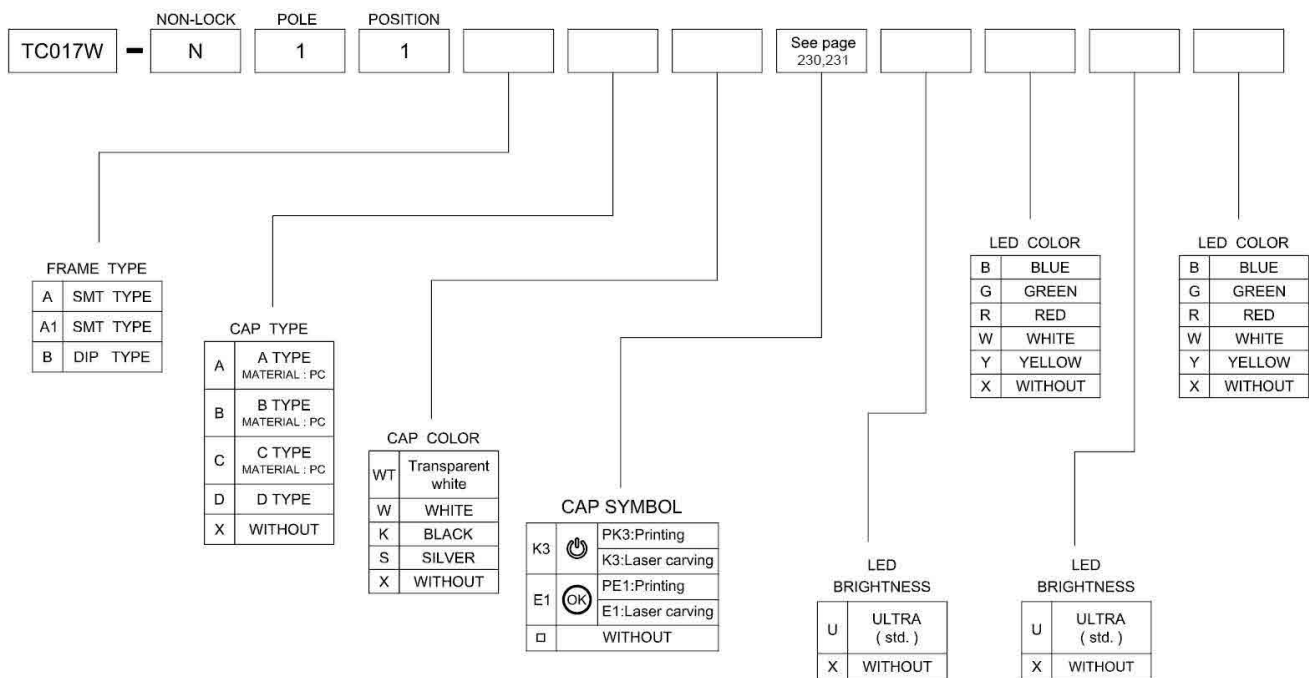
- Consumer products
- Computer products
- Instrumentation
- Communication equipments



SWITCH SPECIFICATIONS		LED SPECIFICATIONS								
POLE - POSITION	Momentary action , SPST	 <p>ATTENTION LEDs are Electrostatic Sensitive devices</p> 	Value / LED Color							
CONTACT RATING	MAX. : 12 V DC , 50 mA MIN. : 1 V DC , 50 μA		Unit	Blue	Pure Green	Red	Yellow	Orange	Green	White
CONTACT RESISTANCE	500 mΩ MAX. 5 V DC ; 10 mA , by Method of Voltage DROP	LUMINOUS INTENSITY@20mA Iv	mcd	80	150	220	180	320	50	450
INSULATION RESISTANCE	100 MΩ MIN. 100 V DC for 1 minute	Dominant Wavelength λD	nm	465	525	630	590	601	567	/
DIELECTRIC STRENGTH	Breakdown is not Allowable ; 250 V AC for 1 Minute	FORWARD VOLTAGE@20mA Vf	V	3.3	3.2	1.95	2	2.1	2.1	3.3
OPERATING FORCE	200 ± 80 gf									
OPERATING LIFE	100,000 cycles									
OPERATING TEMPERATURE RANGE	-40°C ~ 85°C									
TOTAL TRAVEL	0.25 ± 0.1 mm									
SEALING	IP67									

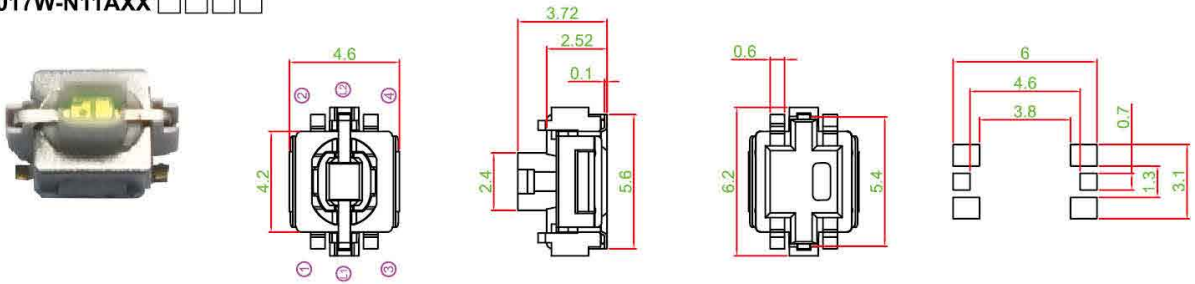
■ A single bin cannot be ordered, please contact us in advance if you need a particular bin sorting before placing your order to clarify the lead time, MOQ and pricing

**HOW TO ORDER**

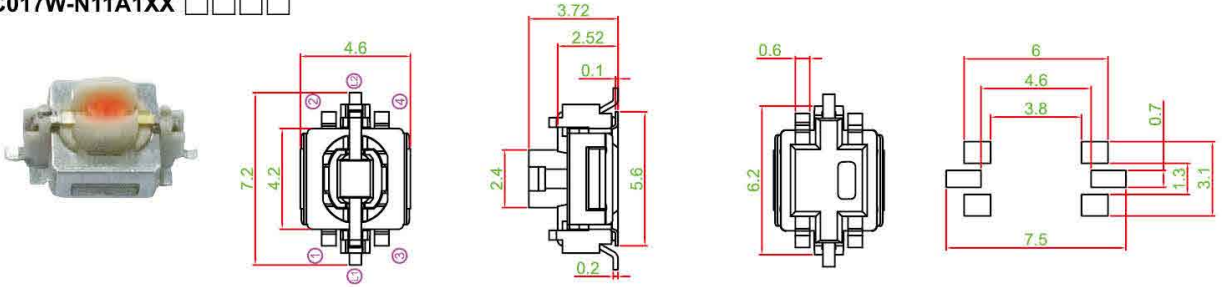


**DIMENSION**

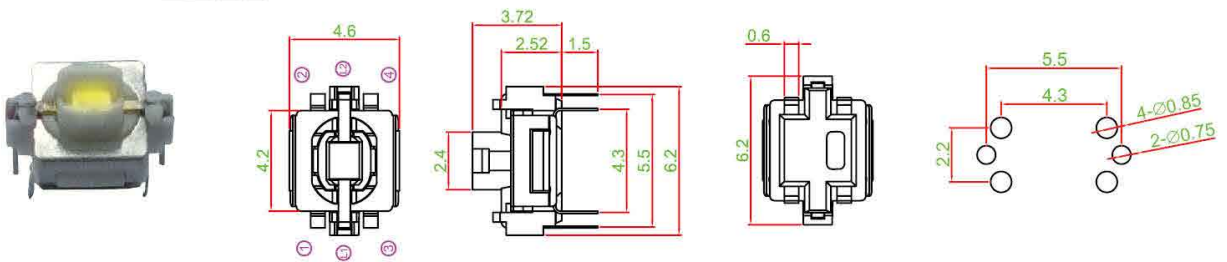
• TC017W-N11AXX □□□□



• TC017W-N11A1XX □□□□



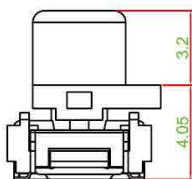
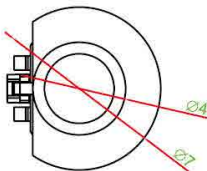
• TC017W-N11BXX □□□□



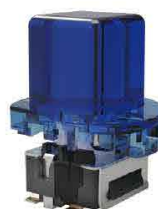
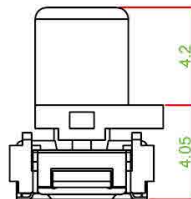
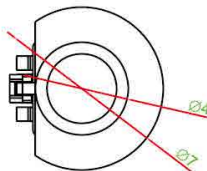
**CAP TYPE**



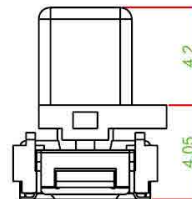
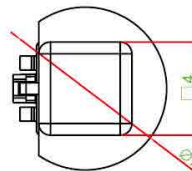
• A TYPE



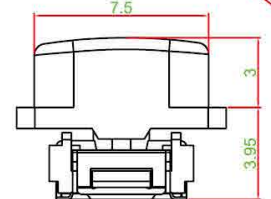
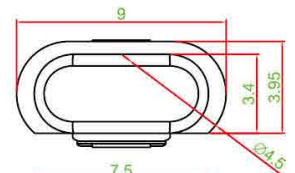
• B TYPE



• C TYPE



• D TYPE



**CIRCUIT**

